

Smart three-color light board



Equiptop Hitech Corp. TEL : (04) 25576060
equiptop@hibox.hinet.net <https://ffg-equiptop.com>

Smart three-color light board

**CNC
production**

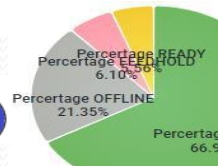


**CNC
production**



DeviceName(機台名稱):
機台001
Program(程式名稱):
Program
Employee_ID(員工ID):
[AB]23457892
Employee_name(員工姓名):
王小明.MING
Partcount_Increment pertime(每次工件增加數量):
1

送出設定



Line	Machine	Product	Employee	Employee Name
1	Machine1	5500	1245678	王小明
2	Machine1	5500	1245678	王小明
3	Machine1	5500	1245678	王小明
4	Machine1	5500	1245678	王小明
5	Machine1	5500	1245678	王小明
6	Machine1	5500	1245678	王小明
7	Machine1	5500	1245678	王小明
8	Machine1	5500	1245678	王小明
9	Machine1	5500	1245678	王小明
10	Machine1	5500	1245678	王小明
11	Machine1	5500	1245678	王小明
12	Machine1	5500	1245678	王小明
13	Machine1	5500	1245678	王小明
14	Machine1	5500	1245678	王小明
15	Machine1	5500	1245678	王小明
16	Machine1	5500	1245678	王小明
17	Machine1	5500	1245678	王小明
18	Machine1	5500	1245678	王小明
19	Machine1	5500	1245678	王小明
20	Machine1	5500	1245678	王小明

**Production
line**

生產數量 加工率(%) 生產程式 操作者

84 49.85 % 陳小華 Kevin



**Packaging
line**

**Dedicated
software**

*Software output video

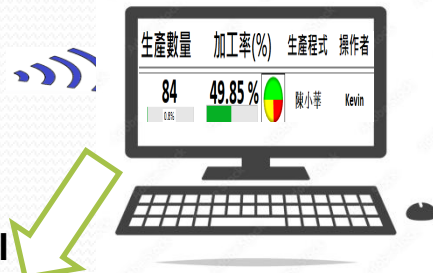
Smart three-color light board

- Light status display ✓
- Real-time data recording, no need for manual recording ✓
- Wi-Fi connection ✓
- Dedicated software (data is permanently stored in the factory) ✓

*例1:



*例2:



*Software output video wall

- Processing quantity calculation ✓
- Processing time ✓
- Standby time ✓
- ALARM time ✓
- Operation personnel set ✓
- Working time cycle ✓
- Calculation of assembly product quantity ✓

EZ-SmartLED Tower GRABIN, Inc

Tower Smartboard

Recording Data

EZ-SmartLED Tower

GRAIN ELECTRONICS

Copyright ©

頁數 1 / 1

10 台

AutoPage

2025/04/01 13:12:13

更新頻率: 5 秒

設定/重置

機台名稱	狀態	時間	生產數量	加工率(%)	生產程式	操作者	單次加工生產週期	加工待機	警告	加總時間
CNC1224	<div></div>	00時00分09秒 13:12:10	84 13:12:10	49.85 %		陳小華 Kevin	20秒 20秒	28分37秒 14分41秒		14分11秒 57分24秒
CuttingMachi...	<div></div>	00時00分09秒 13:12:10	86 13:12:10	25.57 %		Q213 Joh	10秒 10秒	14分42秒 14分10秒		28分37秒 57分29秒
M214	<div></div>	00時00分00秒 13:12:11	11576 13:12:11	33.89 %	program	Employee_n ame	0.082秒 0.101秒	19分27秒 19分18秒		18分39秒 57分24秒
M215	<div></div>	00時00分00秒 13:12:10	196 13:12:10	32.81 %		123 Amy	5秒 6秒	18分50秒 19分56秒		18分38秒 57分24秒
M216	<div></div>	00時00分00秒 13:12:10	175 13:12:10	34.79 %		Product16 RICAHRD	5秒 7秒	19分58秒 18分42秒		18分44秒 57分24秒
M217	<div></div>	00時00分00秒 13:12:10	16968 13:12:10	100 %	program	Employee_n ame	0.188秒 0.203秒	57分29秒 00分00秒		00分00秒 57分24秒
Machine07	<div></div>	00時00分00秒 13:12:10	0 13:12:10	0.00 %	Program	Operator	00時00分 00時00分	00時00分 00時00分		00時00分 00時00分
Machine08	<div></div>	00時00分00秒 13:12:10	0 13:12:10	0.00 %	Program	Operator	00時00分 00時00分	00時00分 00時00分		00時00分 00時00分
Machine09	<div></div>	00時00分00秒 13:12:10	0 13:12:10	0.00 %	Program	Operator	00時00分 00時00分	00時00分 00時00分		00時00分 00時00分

衆程科技股份有限公司 TEL : (04) 25576060

Charles@equiptop.com.tw <https://ffg-equiptop.com>

Smart three-color light board

●Real-time data updates :

Keep track of production progress and improve response speed

Processing quantity calculation

Processing time ✓

Standby time ✓

ALARM time ✓

Operation personnel set

Working time cycle ✓

Calculation of assembly product quantity ✓

Machine smart dashboard (production status/production quantity/processing rate/startup time)

EZ-SmartLED Tower GRAIN E., Inc

</

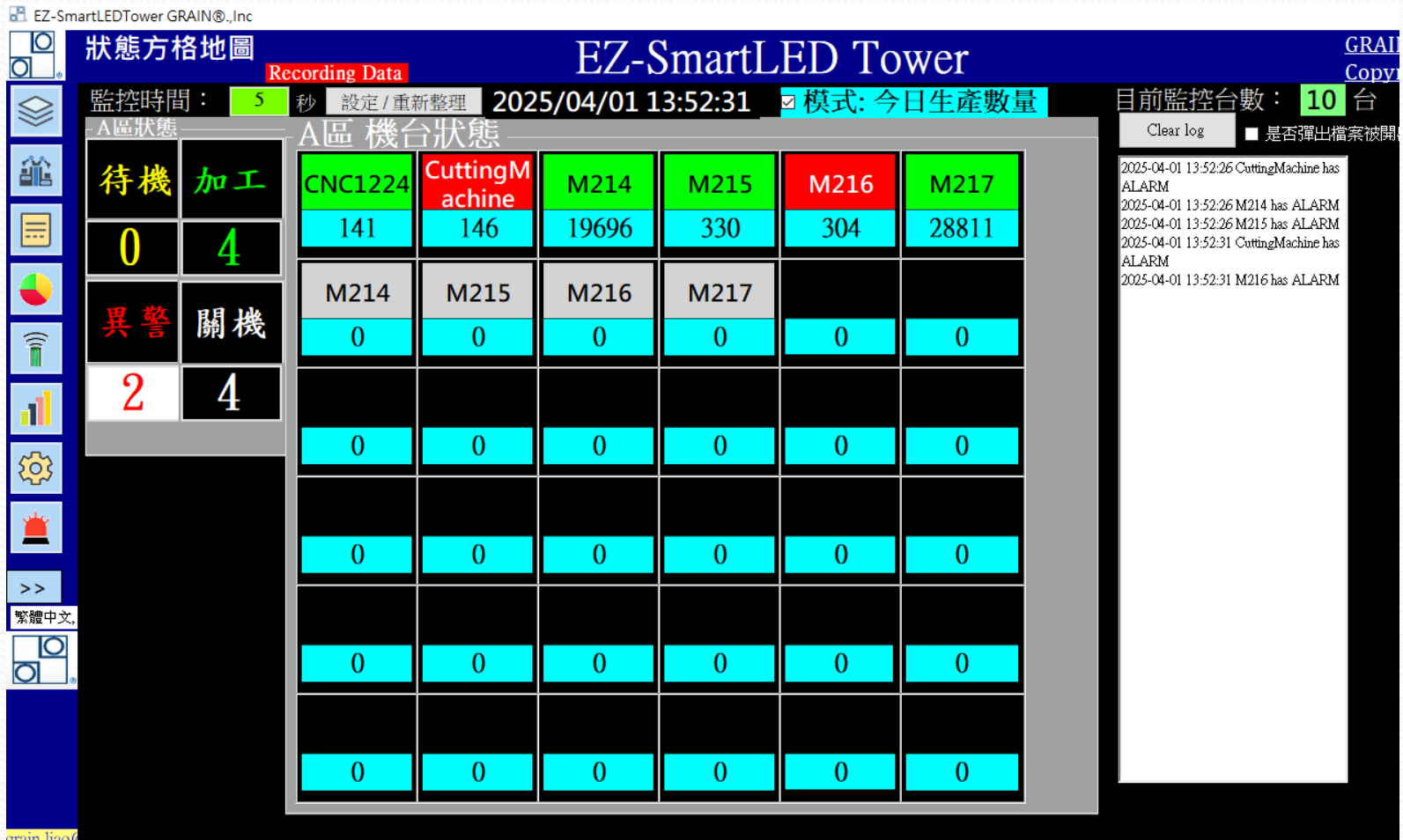
繁體中文

Smart three-color light board

●Real-time observation of production line :

Managers can monitor progress at any time through the video wall .

Machine signage

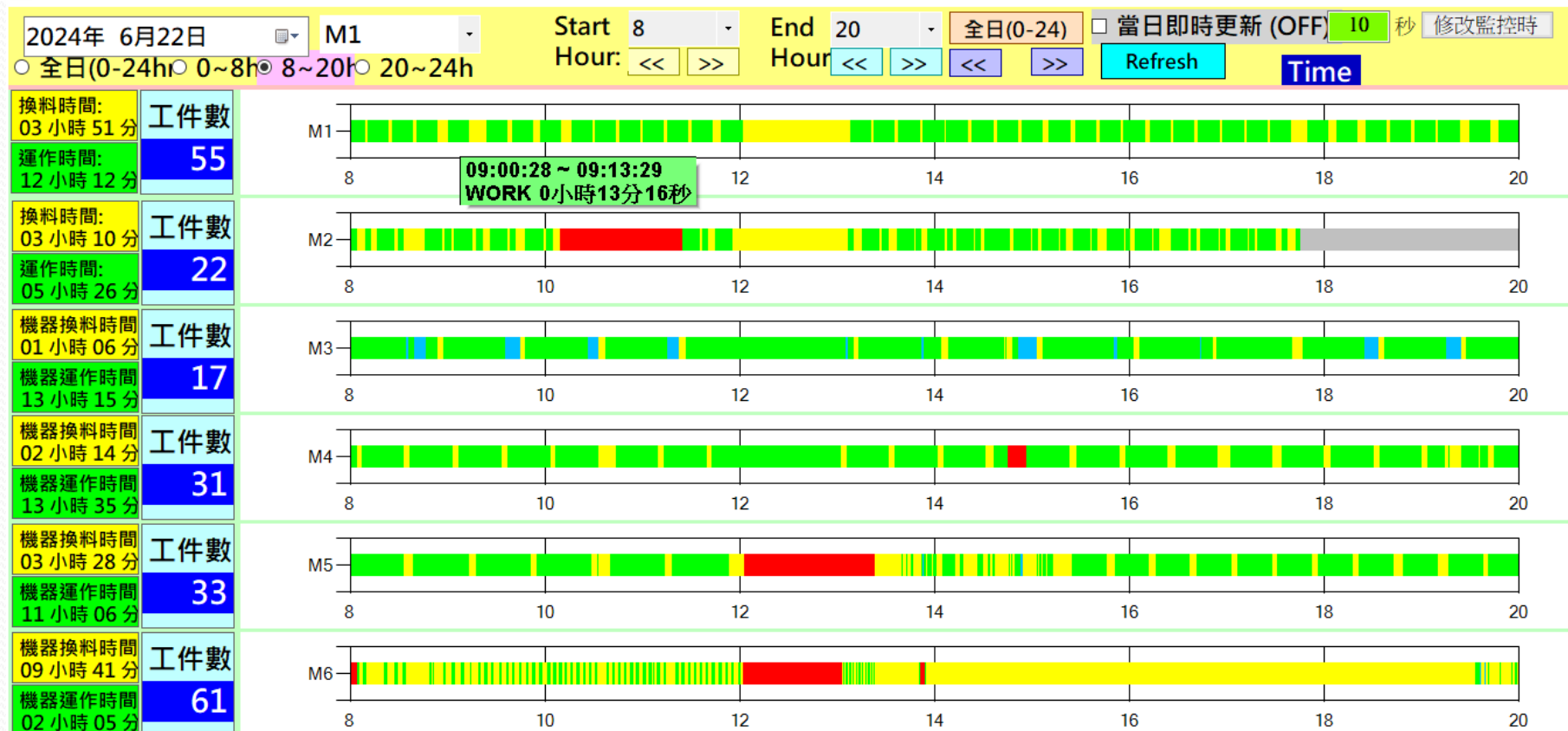


● Data Analysis :

Provide reports and trend analysis to optimize production efficiency, understand production cycle and accurately grasp

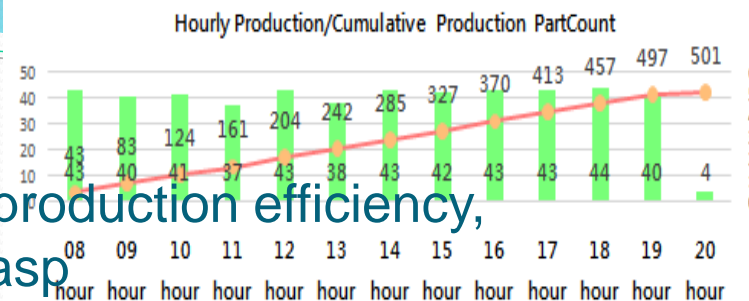
TimeLine of the day, clearly understand the production cycle

詳細加工時間軸



六台機器工作時間
57 小時 40 分

六台機器換料時間:
23 小時 32 分



●Data Analysis :

Machine production quantity Select date (by day/by week)

EZ-SmartLEDTower GRAIN®,Inc

Search

NOT Recording Data

Start Day: 2024年 6月11日

Data in 1 days

Search Data Success

FontSize: 10

機台生產數量

機台日報表

圓餅圖

長條圖

週報表(機台)

週報表(產品)

週報表(人員)

Machine:

EmployeeName:

Program:

Reset Filter

N DAY Search

1 Week Search

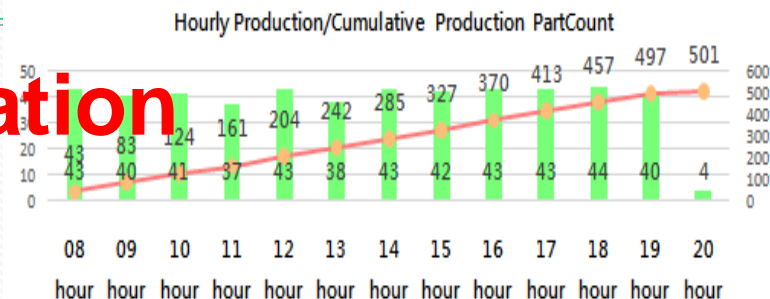
Export (.csv) to file

日期	機台名稱	員工姓名	員工ID	產品名稱	生產數量
2024-06-14	M1	Employee_na...	Employee_ID	program	35
2024-06-14	M2	Name_M2	ID_M2	Product_M2	24
2024-06-14	M3	Name_M3	ID_M3	Product_M3	16
2024-06-14	M4	Name_M4	ID_M4	Product_M4	30
2024-06-14	M5	Name_M5	ID_M5	Product_M5	44
2024-06-14	M6	Employee_na...	Employee_ID	program	26
2024-06-13	M1	Employee_na...	Employee_ID	program	32
2024-06-13	M2	Name_M2	ID_M2	Product_M2	22
2024-06-13	M3	Name_M3	ID_M3	Product_M3	15
2024-06-13	M4	Name_M4	ID_M4	Product_M4	29
2024-06-13	M5	Name_M5	ID_M5	Product_M5	40
2024-06-13	M6	Employee_na...	Employee_ID	program	12
2024-06-12	M1	Employee_na...	Employee_ID	program	150
2024-06-12	M2	Name_M2	ID_M2	Product_M2	26

GRAIN ELECTRONICS
Copyright ©

●Data Analysis :

Machine Production Utilization Daily Report



EZ-SmartLEDTower GRAIN®,Inc



Search

NOT Recording Data

EZ-SmartLED Tower

GRAIN ELECTRONICS

Copyright ©

Start Day: 2024年 6月 1日 Data in 1 days

Start Date: 2024-06-01
End Date: 2024-06-01

FontSize: 10

機台生產數量 機台日報表 圓餅圖 長條圖 週報表(機台) 週報表(產品) 週報表(人員)

Select a machine Machine: Reset Filter

M2
M3
M4

Day Review

Day Report

DAY
Detail

DayDetail
☐ Only show

一鍵匯出 DayReview

CSV

一鍵匯出 DayReport

CSV

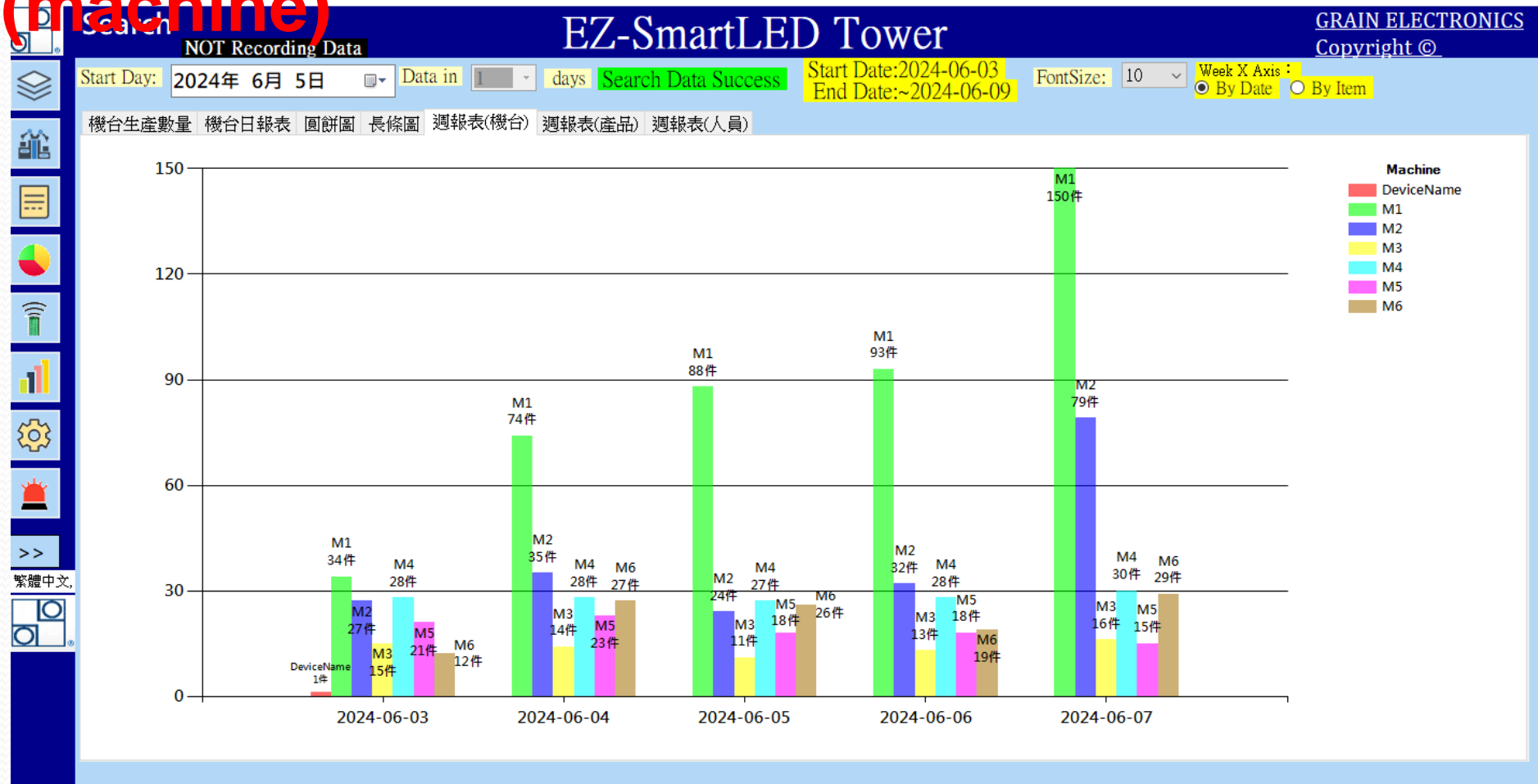
日期	機器	狀態	開始時間	結束時間	區段時間	區段數量	累計數量	產品	人員ID	人員
2024-06-01	M2	WORK	14:33:25	14:37:25	00小時04分30秒	1	16	Product M2	ID M2	Name M2
2024-06-01	M2	HOLD	14:37:55	14:39:25	00小時02分00秒	0	16	Product M2	ID M2	Name M2
2024-06-01	M2	WORK	14:39:55	14:43:55	00小時04分30秒	1	17	Product M2	ID M2	Name M2
2024-06-01	M2	HOLD	14:44:25	14:45:55	00小時02分00秒	0	17	Product M2	ID M2	Name M2
2024-06-01	M2	WORK	14:46:25	14:50:25	00小時04分30秒	1	18	Product M2	ID M2	Name M2
2024-06-01	M2	HOLD	14:50:55	14:57:55	00小時07分30秒	0	18	Product M2	ID M2	Name M2
2024-06-01	M2	WORK	14:58:25	15:02:25	00小時04分30秒	1	19	Product M2	ID M2	Name M2
2024-06-01	M2	HOLD	15:02:55	15:04:25	00小時02分00秒	0	19	Product M2	ID M2	Name M2
2024-06-01	M2	WORK	15:04:55	15:08:26	00小時04分01秒	1	20	Product M2	ID M2	Name M2
2024-06-01	M2	HOLD	15:08:56	15:10:26	00小時02分00秒	0	20	Product M2	ID M2	Name M2
2024-06-01	M2	WORK	15:10:56	15:14:26	00小時04分00秒	1	21	Product M2	ID M2	Name M2
2024-06-01	M2	HOLD	15:14:56	15:19:56	00小時05分30秒	0	21	Product M2	ID M2	Name M2
2024-06-01	M2	WORK	15:20:26	15:24:26	00小時04分30秒	1	22	Product M2	ID M2	Name M2
2024-06-01	M2	HOLD	15:24:56	15:26:26	00小時02分00秒	0	22	Product M2	ID M2	Name M2
2024-06-01	M2	WORK	15:26:56	15:30:56	00小時04分30秒	1	23	Product M2	ID M2	Name M2
2024-06-01	M2	HOLD	15:31:26	15:44:56	00小時14分00秒	0	23	Product M2	ID M2	Name M2
2024-06-01	M2	ALARM	15:45:26	17:30:58	01小時46分02秒	0	23	Product M2	ID M2	Name M2
2024-06-01	M2	OFFLINE	17:31:28	23:59:59	06小時28分31秒	0	23	Product M2	ID M2	Name M2

繁體中文



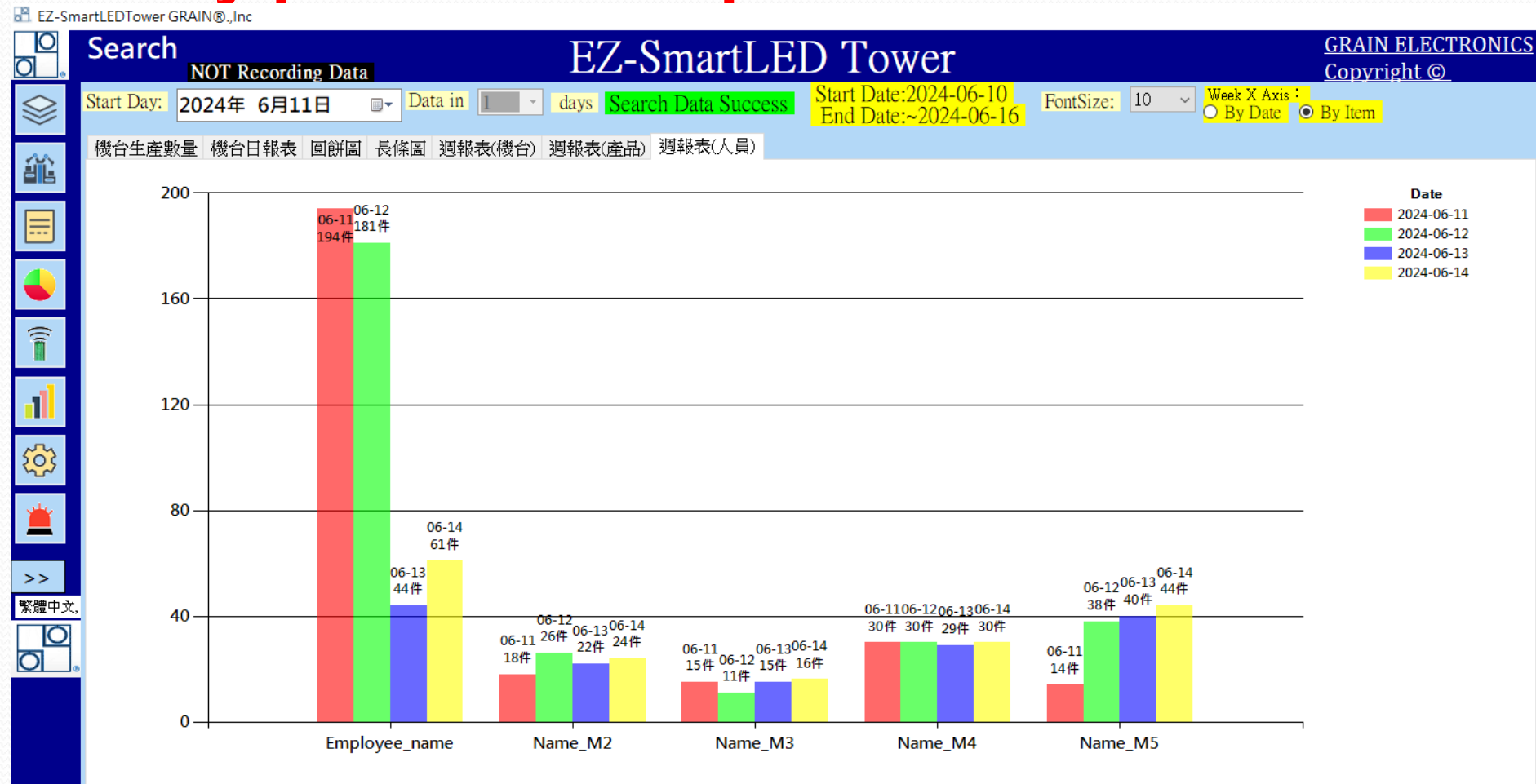
●Data Analysis :

Weekly production report line chart (machine)



●Data Analysis :

Weekly production report line chart



●Data Analysis :

Machine utilization rate & daily production by hourly/total

EZ-SmartLEDTower GRAIN®,Inc

綜合資料分析

NOT Recording Data

EZ-SmartLED Tower

GRAIN ELECTRONICS

Copyright ©

Start Day: 2024 年 6 月 1 日

Search Data Success

Start Date:2024-06-01

End Date:2024-06-01

機器稼動率 週產能表格 (機台KPI) 週產能表格 (人員KPI) 週產能表格 (產品KPI)

Select a machine

Search

Machine:

*All

M2

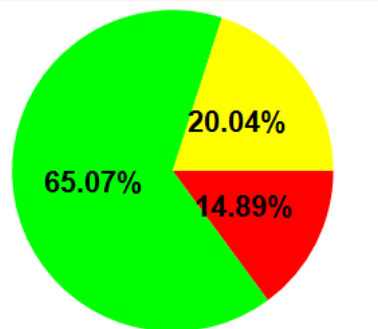
M3

M4

M5

M6

機器稼動率 (%)



Status (%)

14.89%

65.07%

20.04%

稼動時間狀態列表 :

機器啟動累計時間: 45 小時 20 分

當日加工數量: 68

平均加工時間: 00 小時 26 分

機器閒置累計時間: 09 小時 05 分

機器工作累計時間: 29 小時 30 分

機器暫停累計時間: 00 分 00 秒

機器警告累計時間: 06 小時 45 分

機器維修累計時間: 00 分 00 秒

機器關機累計時間: 00 hour 00 min

日生產報表 : (每小時 / 總數)

	Machine	H00	H01	H02	H03	H04	H05	H06	H07	H08	H09	H10	H11	H12
	M2 Hour	0	0	0	0	0	0	0	0	0	0	2	7	0
	M3 Hour	0	0	0	0	0	0	0	0	1	1	1	2	0
	M4 Hour	0	0	0	0	0	0	0	0	1	2	2	2	1
	M5 Hour	0	0	0	0	0	0	0	0	1	2	2	1	1
	M6 Hour	0	0	0	0	0	0	0	0	1	2	1	0	0
	M2 Total	0	0	0	0	0	0	0	0	0	0	2	9	9
	M3 Total	0	0	0	0	0	0	0	0	1	2	3	5	5

繁體中文

●Data Analysis :

Weekly production quantity (machines/personnel/products)

EZ-SmartLEDTower GRAIN®,Inc

綜合資料分析

NOT Recording Data

Start Day: 2024年 6月29日

Search Data Success

Start Date:2024-06-24
End Date:~2024-06-30

機器稼働率

週產能表格 (機台KPI)

週產能表格 (人員KPI)

週產能表格 (產品KPI)

週產能表格 (機台KPI) :

Refresh

Export to file

	MachineName	2024-06-24	2024-06-25	2024-06-26	2024-06-27	2024-06-28	2024-06-29	2024-06-30
▶	M1	55	81	78	149	162	16	0
	M2	22	0	0	0	302	14	0
	M3	17	28	31	25	29	11	0
	M4	31	51	52	97	170	53	0
	M5	33	112	155	82	55	18	0
	M6	61	36	2	49	303	0	0
•								

GRAIN ELECTRONICS

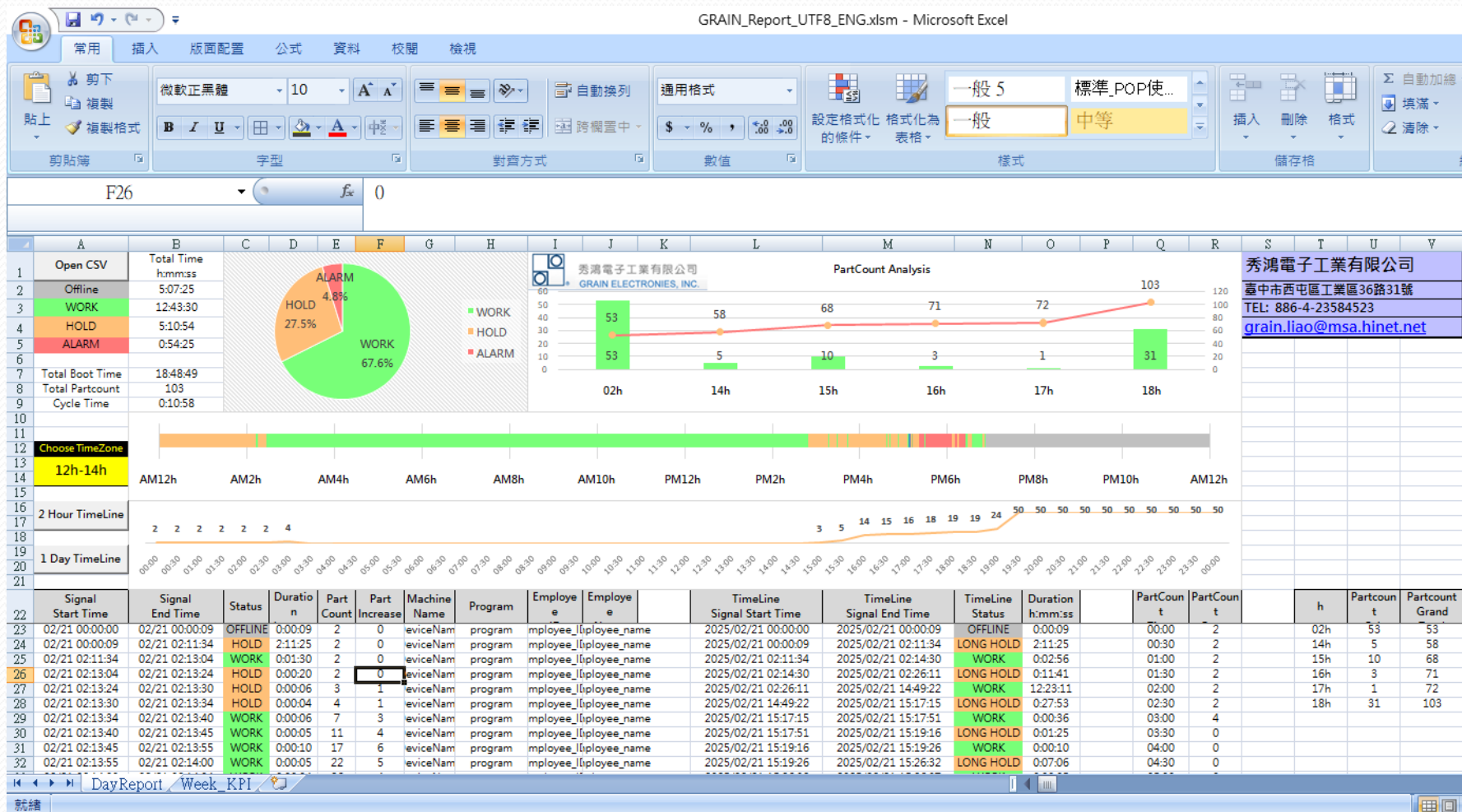
Copyright ©

>>

繁體中文

●Data Analysis :

Excel daily/weekly reports



●Data Analysis :

Alarm occurrence time/end time/duration

EZ-SmartLEDTower GRAIN®, Inc

Alarm Record

NOT Recording Data

EZ-SmartLED Tower

GRAIN ELECTRONICS

Copyright ©

Start Day: 2024年 6月 1日

Data in 1 days

Search Data Success

Start Date: 2024-06-01
End Date: 2024-06-01

FontSize: 10

Alarm Record

Machine:

*
M1
M2
M3
M4

Program:

*
Product_M2
Product_M3
Product_M1
Product_M5

Reset Filter

N DAY
Search

1 Week
Search

Export (.csv)
to file



機台名稱	警告發生時間	警告結束時間	產品名稱	AlarmTime(s)
M2	2024-06-01 10:36:21	2024-06-01 10:46:21	Product_M2	600
M2	2024-06-01 15:45:26	2024-06-01 17:31:28	Product_M2	6362
M3	2024-05-31 21:53:22	2024-06-01 07:57:01	Product_M3	36219
M3	2024-06-01 14:22:25	2024-06-01 14:26:25	Product_M3	240
M4	2024-05-31 21:52:52	2024-06-01 08:07:01	Product_M4	36849
M4	2024-06-01 17:28:28	2024-06-01 17:31:28	Product_M4	180
M5	2024-05-31 15:29:25	2024-05-31 15:31:29	Product_M5	124
M5	2024-05-31 21:52:52	2024-06-01 07:58:31	Product_M5	36339
M5	2024-06-01 17:28:28	2024-06-01 17:31:28	Product_M5	180
M6	2024-05-31 21:52:22	2024-06-01 08:00:01	Product_M6	36459
M6	2024-06-01 13:14:23	2024-06-01 17:31:28	Product_M6	15425

繁體中文

Customers need:

- ◇ **Production information is delayed, and managers cannot grasp the progress in real time**
- ◇ **Failure to respond to production line anomalies leads to production losses**
- ◇ **Traditional recording methods are cumbersome and labor costs are high**
- ◇ **Lack of real-time data analysis and insufficient basis for decision-making**

Comparison of traditional methods and smart three-color light systems

- Real-time collection of production data and display on the video wall
- Provide efficient and transparent management

Item	Traditional production management	Real-time monitoring system
News Update	Dependence on manual reporting, delayed time	Instant data transmission, no need for manual recording ✓
Abnormal reaction	Manual inspection is required, and abnormalities are difficult to detect	Automatic alarm notification, immediate handling of abnormalities ✓
Data Analysis	Manual recording leads to inaccurate data	Real-time grasp of production line dynamics to improve production efficiency ✓
Remote Monitoring	Need to the site to check the situation	Understand production line dynamics anytime, anywhere and improve flexibility ✓
Manpower requirements	Requires dedicated personnel to monitor and record	Reduce labor costs and improve management efficiency ✓

Solutions

- **Real-time data updates :**

- Keep track of production progress and improve response speed °

- **Abnormal alarm notification:**

- Automatically notify relevant personnel when equipment is abnormal, materials are out of stock, or production is delayed

- **Historical data analysis :**

- Understand the production cycle, provide reports and trend analysis, and optimize production efficiency.

- **Remote monitoring:**

- Check production status at any time via mobile phone or computer.

Usage scenario demonstration

- **Real-time observation of production line :**

Managers can monitor progress at any time through the video wall.

- **When an abnormal situation occurs :**

The system automatically sends notifications and technicians respond quickly.

- **Production data statistics and decision-making:**

Management makes optimizations based on data analysis.

Technology and Security

- **High stability:** Industrial-grade equipment design ensures long-term stable operation.
- **Security:** Local transmission ensures production data is not leaked. Permanently stored in the factory, ensuring confidentiality.
- **High device compatibility:** Seamlessly integrates with a variety of production equipment and can be integrated with existing ERP/MES systems.
- **Remote management:** Monitor production status anytime via computer or mobile phone. Monitor production line progress from both inside and outside the factory.

Value and Return

- **Improve production efficiency by 20%+:**
Quantify production cycles, identify pain points, reduce waiting times,
and optimize scheduling.
- **Reduce labor costs by 30%+**
Reduce the need for dedicated personnel to copy statistics.
- **Abnormal reaction speed increased by 50%**
Reduce equipment downtime, quickly respond to failures and material shortages, and improve equipment utilization.
- **Shortened decision-making time**
More flexible production planning

Smart three-color light board



AI platform: equiptop.aikm888.com

Equiptop Hitech Corp. TEL : (04) 25576060

Charles@equiptop.com,tw <https://ffg-equiptop.com>