



www.equiptop.com.tw



SHM *SERIES*

CNC Horizontal Boring & Milling Machine

EQUIPTOP CNC HORIZONTAL BORING & MILLING MACHINE

Stability, Rigidity & High accuracy

With over 30 years experience on boring machine. EQUIPTOP has built a solid reputation for quality and reliability.

Up to now, products are well known around the world and keep working on innovation, marketing, quality improvement and service support.

EQUIPTOP provide full range specification of boring machine to meet the requirement of diversification application.

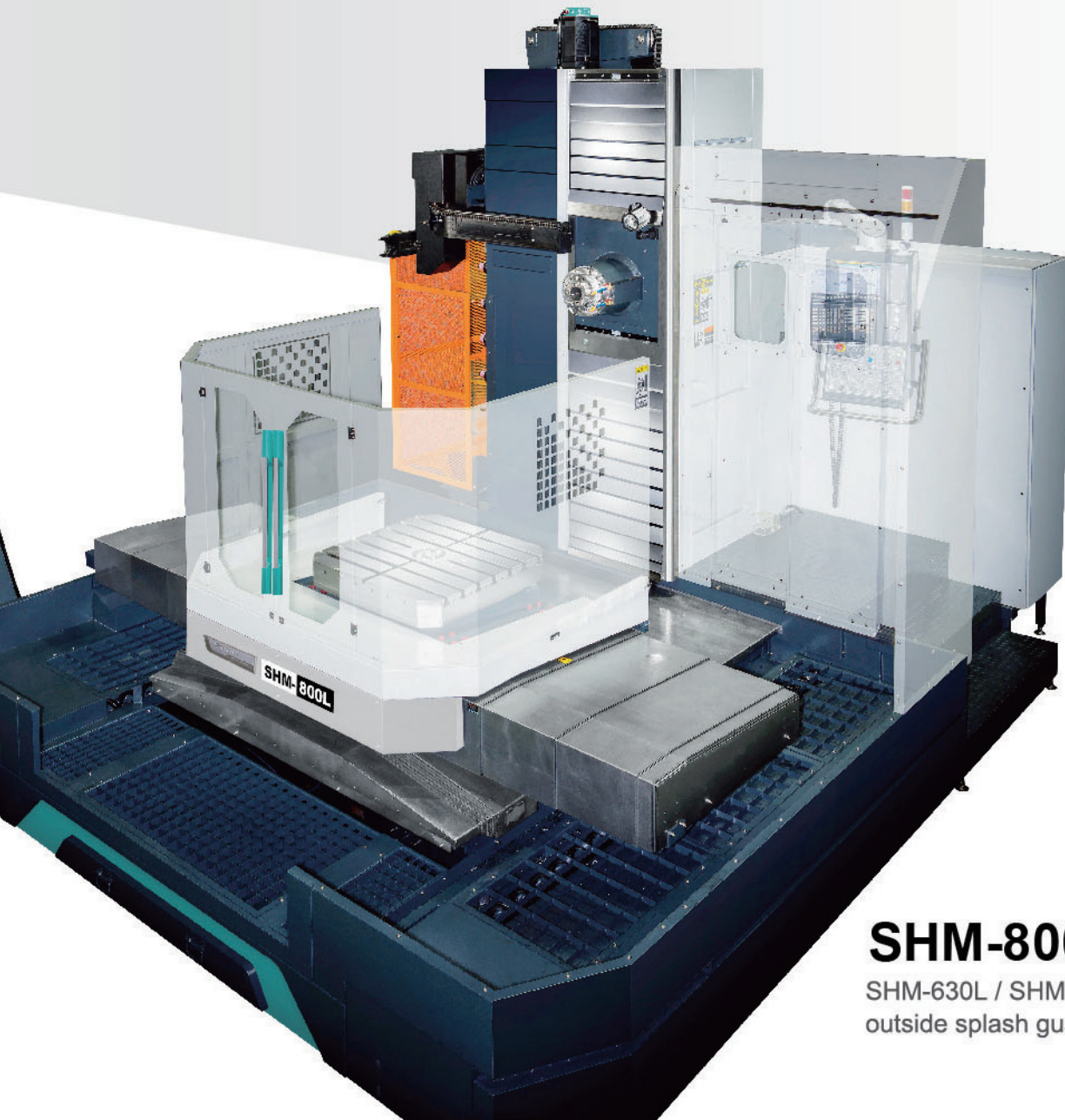
With high rigidity structure design, showing excellent high rigidity and processing stability. The high precision rotary table provides axial indexing positions, could completely meet the requirement on processing accuracy.



SHM-800

Outside splash guard (opt) & working table fully splash guard (opt)





SHM-800L

SHM-630L / SHM-800L
outside splash guard (opt)

Most Professional Manufacturing Technology

EQUIPTOP boring and milling machine produced by skillful engineer. During the machine assembly process, every procedure, have to pay the greatest attention! Every machine should pass strict quality inspection before shipped to ensure the best quality and performance.

SHM-630L

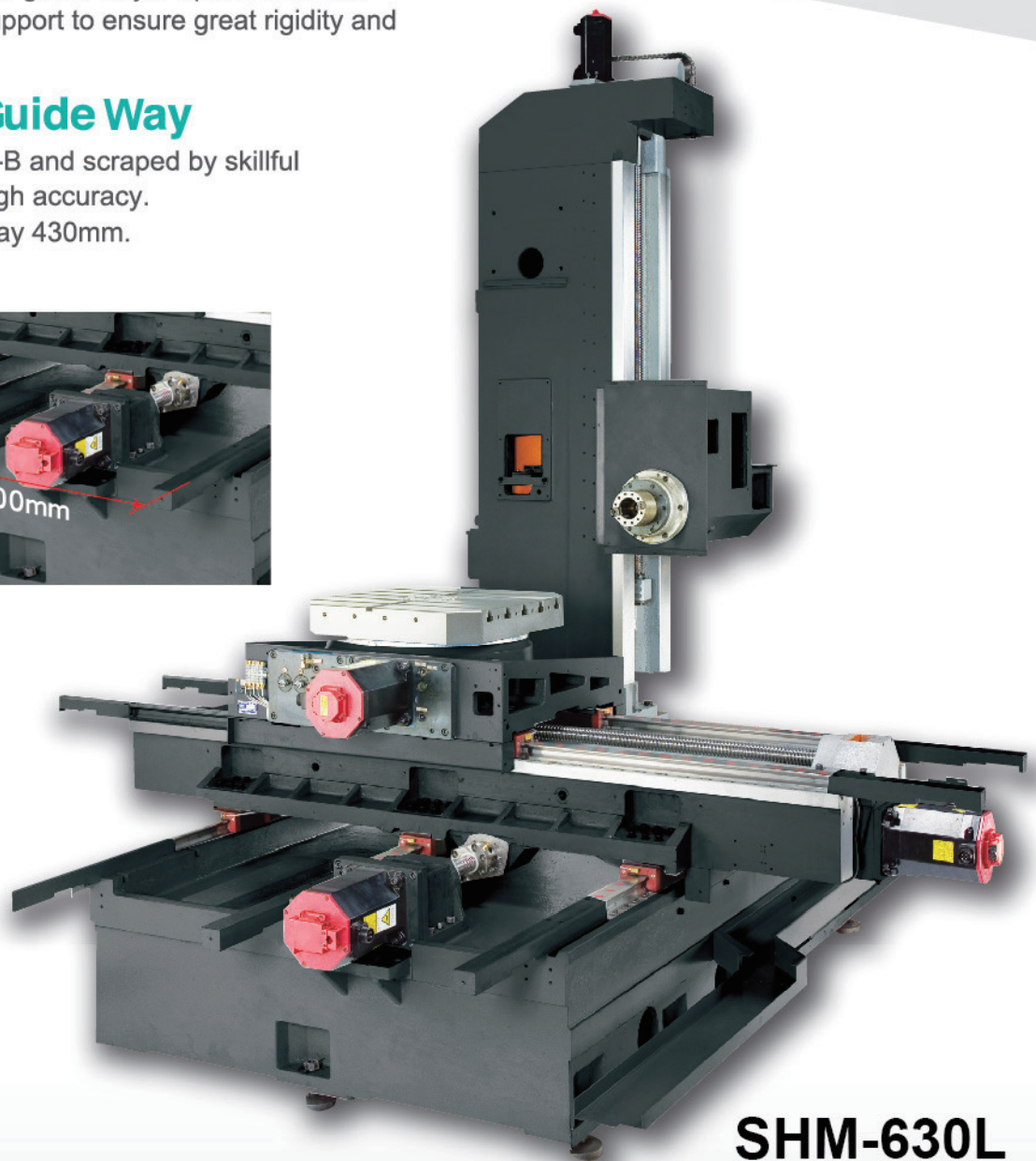
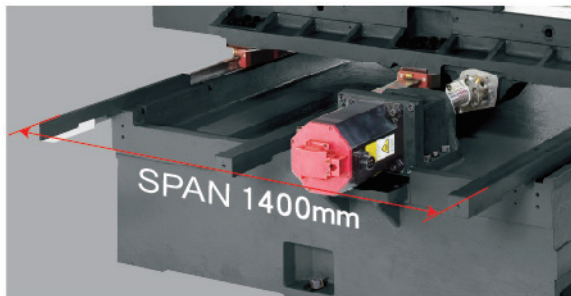
X axis, Two Linear Guide Ways Z axis, Three Linear Guide Ways

Imported roller type linear guideways with high rigidity and high precision.

Z axis with three linear guide ways. Span :1400mm
Working table fully support to ensure great rigidity and high accuracy.

Y axis Box Guide Way

Attaches with Turcite-B and scraped by skillful technician to show high accuracy.
Span between box way 430mm.



SHM-630L

Rotary Table (Std.)

Rotary table uses high quality Clutch Gears to improve high index positioning.

SHM-630L table size 630x630mm
indexing 1°, loading capacity 1500 kgs

SHM-800L table size 800x800mm
indexing 1°, loading capacity 3000 kgs

Hydraulic Counterbalance

The spindle uses hydraulic counterbalance to ensure moving smoothly and good stability.

SHM-800L

X axis Two Linear Guide Ways Z axis Four Linear Guide Ways

Imported roller type linear guide ways with high rigidity and high precision.

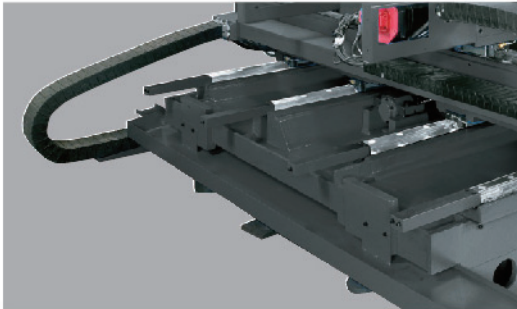
Low friction, long life, ensure good accuracy after years.

Z axis with four linear guide ways, span: 1900mm

Working table fully support to ensure great rigidity and high accuracy.

Y axis Box Guide Way

Dual box guide way with step design, two box way with deviation 70mm step, enhance the cutting strength.
Span: 570mm



SHM-800

Three Axis Box Way.

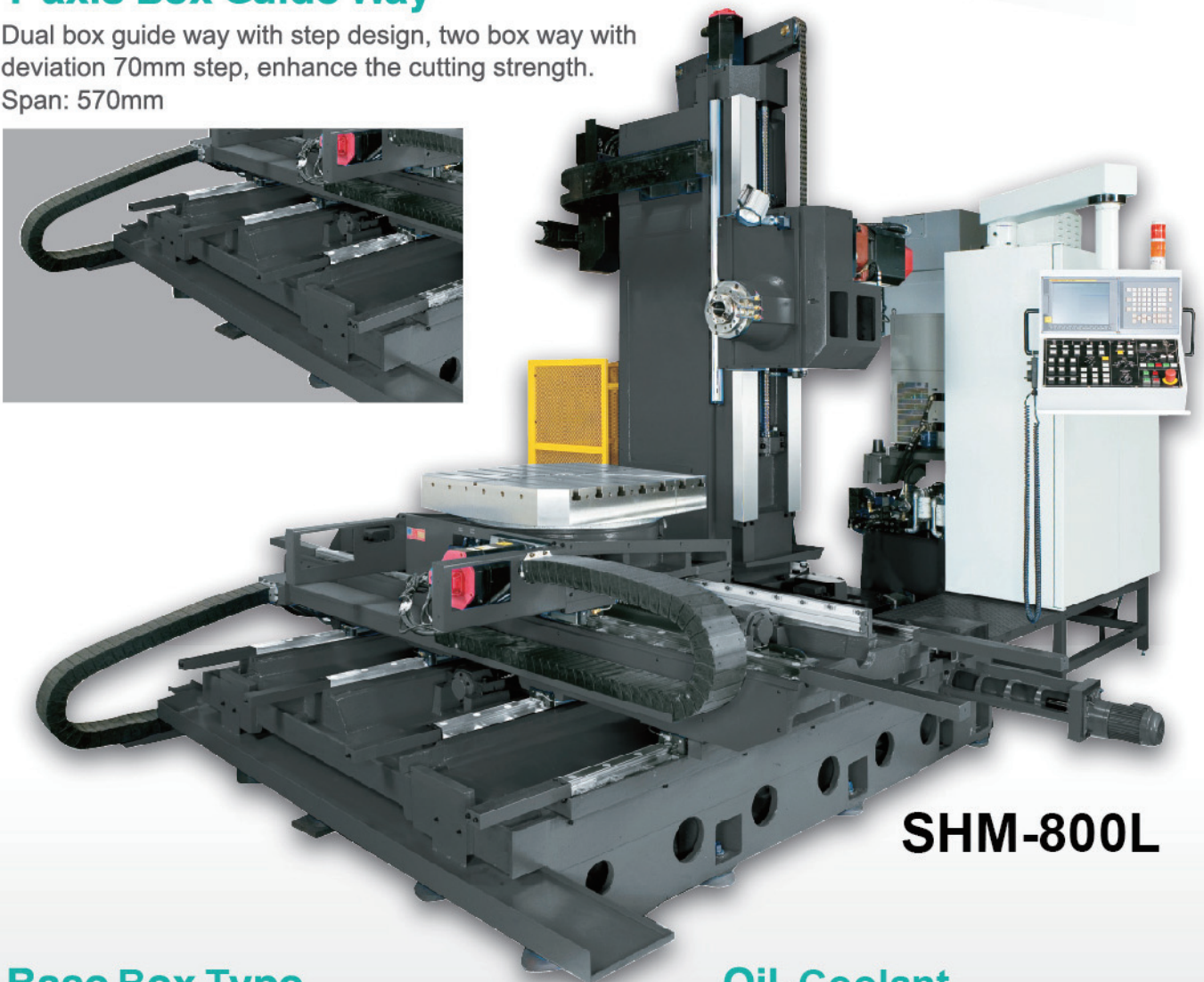
One piece base designed with two Main guide ways and Two Sub guide ways

Provide table fully support to ensure greatest machining stability for big-size work piece.

Y axis box guide way span 570mm

Z axis Main guide way span 855mm

Z axis Sub guide ways span 1980mm



SHM-800L

Base Box Type Structure Design

Provide the most stable support base for large workpiece.

Three axes fully support without overhanging.

Oil-Coolant Separated Design

Oil-coolant separation design, avoid cutting liquid deteriorated.

Standard Accessories

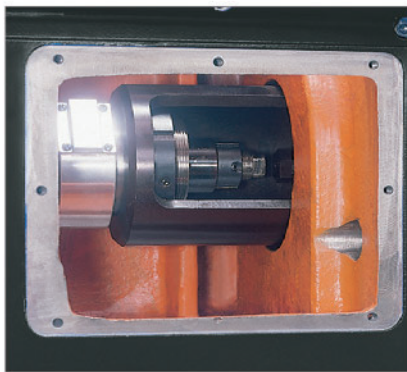


High rigidity Spindle Ram

The distance between the spindle nose and the table center is only 225mm.

Effectively improve processing efficiency.

Equipped with ZF gear box to provide high torque.



Floating Type Unclamping System

Avoid the spindle bearing damaged by unclamping. To improve the spindle life, protect the bearing and ensure spindle accuracy.



High Precision Spindle

Spindle is machined from high quality alloy steel, equipped with high-precision, high rigidity and precision bearings.

Ensure precise boring job.

Equipped with oil cooler system to ensure the spindle running at constant temperature.

Spindle speed: 4000(std.)/ 6000rpm(opt.)



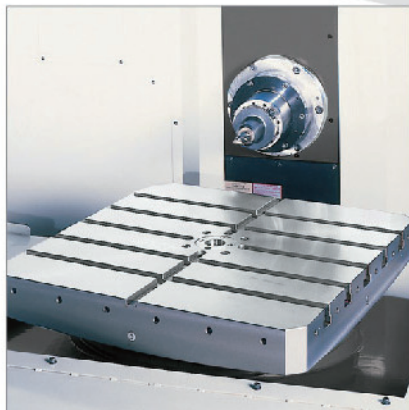
High performance Electrical Cabinet

Equipped with a fully enclosed circulated heat exchanger which maintains constant temperature in the electrical cabinet.

Air conditioner available as optional.

Electric wiring in the electrical cabinet meets international standards, increasing service life of the control components and safety.

Optional Accessories



Indexing Rotary table

SHM-630L Table size: 700x700mm, 700x900mm

SHM-800/ SHM-800L Table size: 1000x800mm, 1000x1000mm

Indexing: 1° or 0.001°



Chain Type Magazine

ATC 40 (Standard)

ATC 60 (Optional)

Random tool selection mode.



P.S:ATC Magazine with
Splash guard
(Standard for CE)



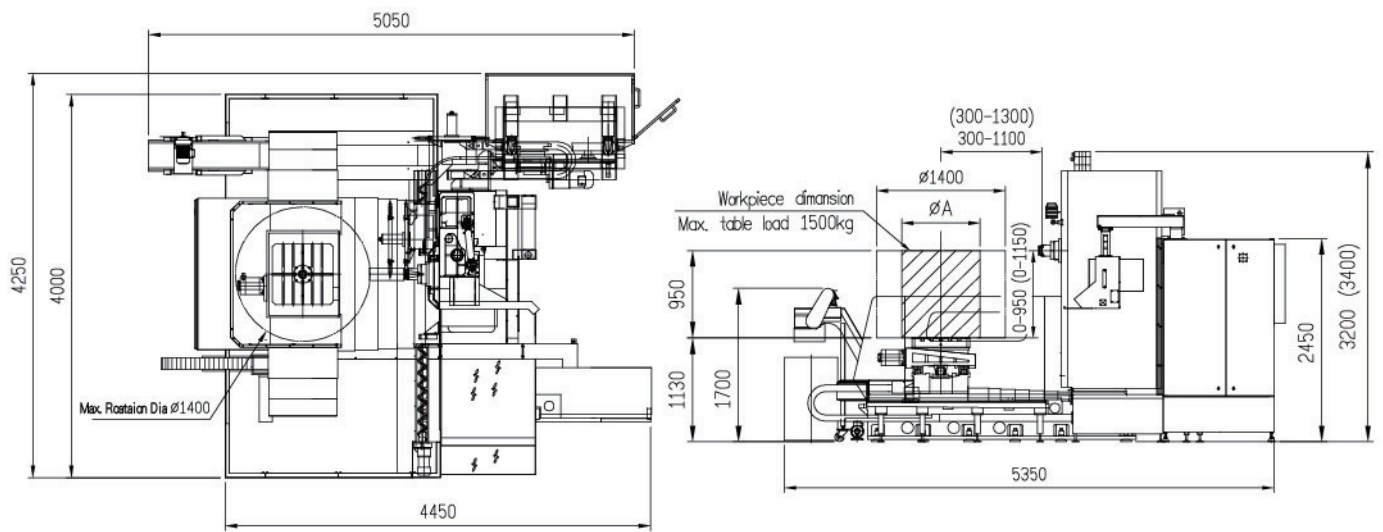
Square Block

Different dimension to meet different requirement.

Machine Dimensions

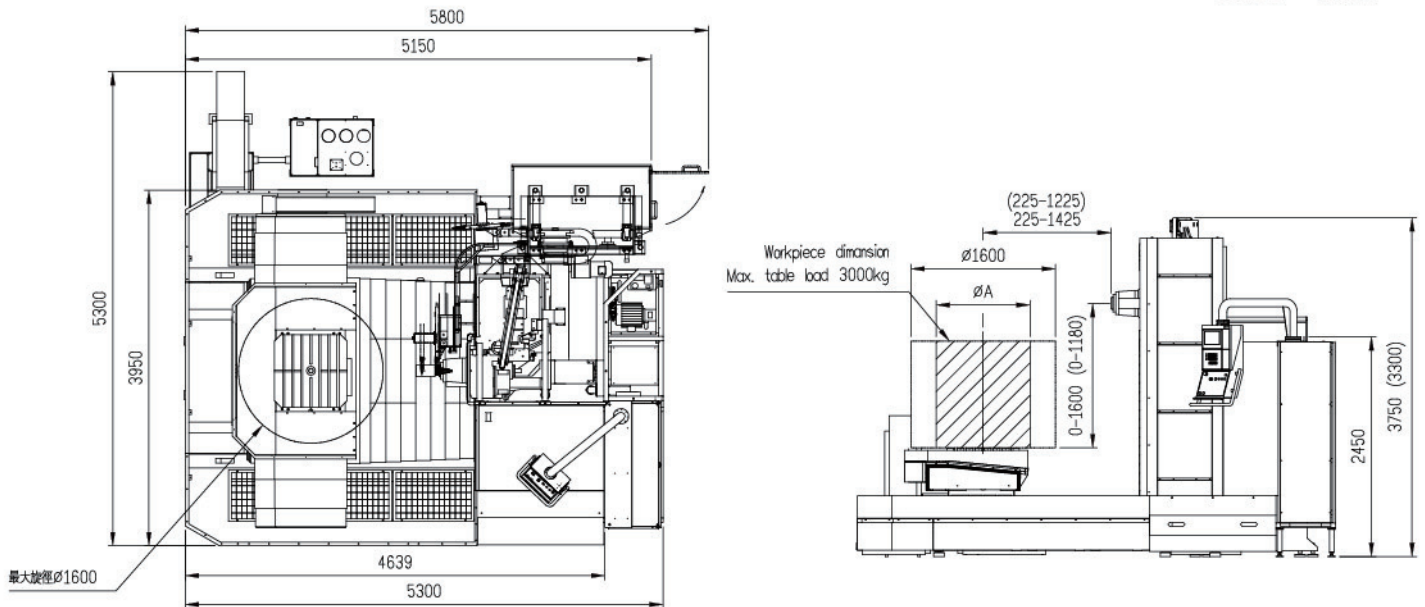
SHM-630L

Unit : mm



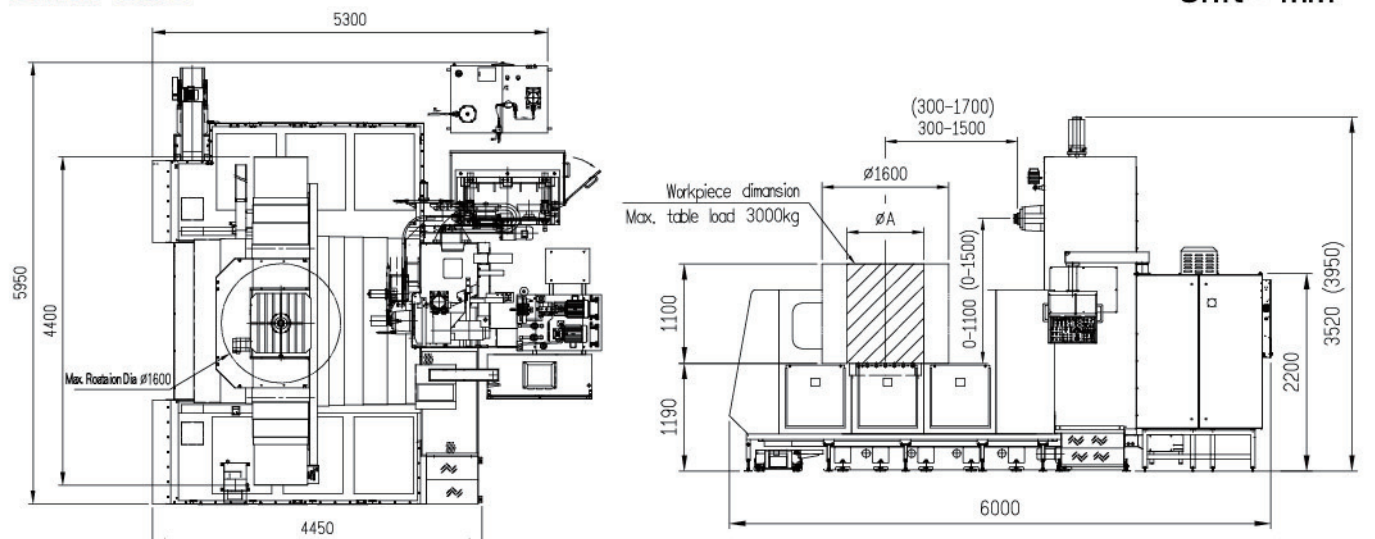
SHM-800L

Unit : mm



SHM-800

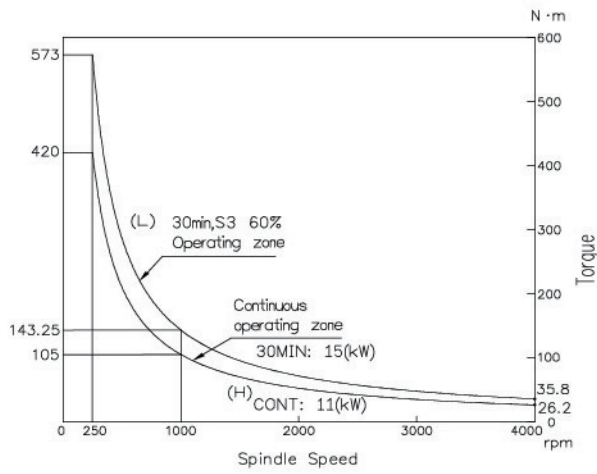
Unit : mm



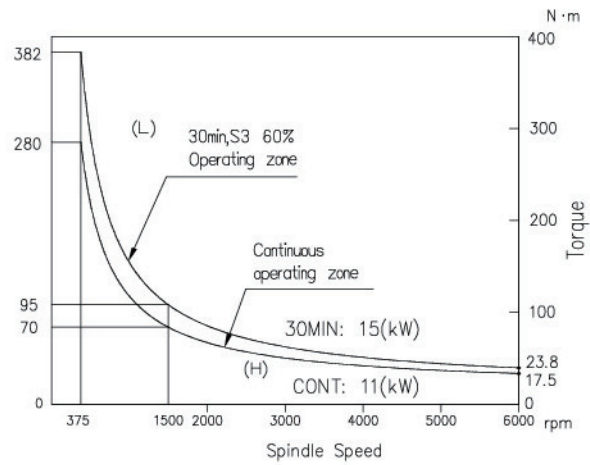
Spindle Power/ Output Diagram

Standard

FANUC α 12, 4000rpm, ZF Gear Box

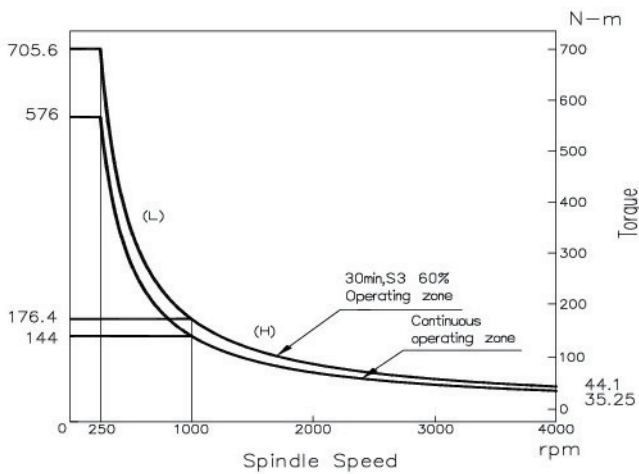


FANUC α 12, 6000rpm, ZF Gear Box



Optional

FANUC α 15, 4000rpm, ZF Gear Box



FANUC α 15, 6000rpm, ZF Gear Box

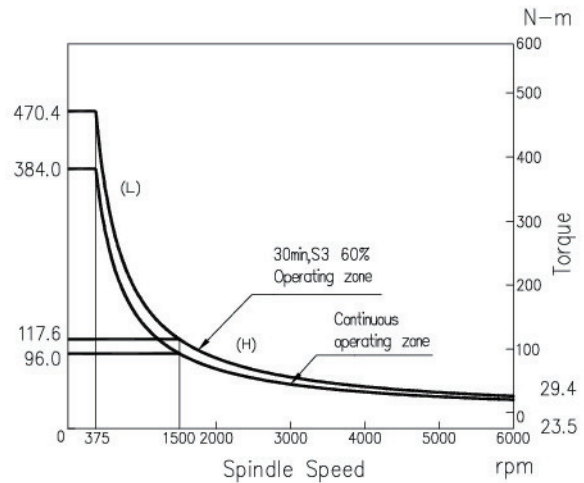
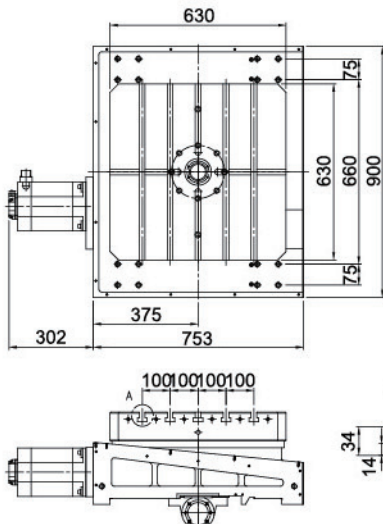
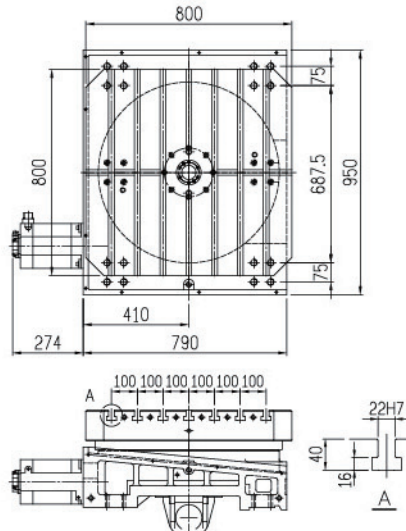


Table Size

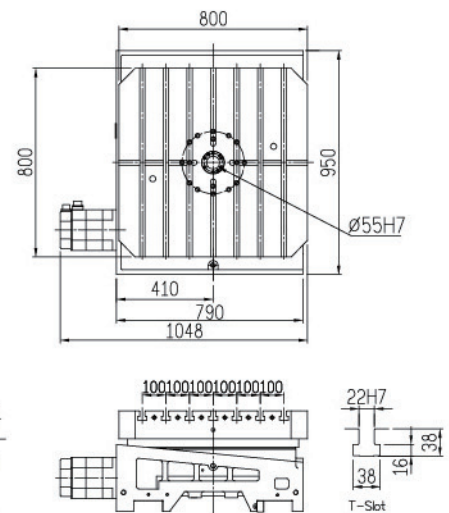
SHM-630L



SHM-800L



SHM-800



Machine Specifications

Items	Unit	SHM-630L	SHM-800L
TABLE			
Size	mm	630 x 630(700 x 700 / 700 x 900)	800 x 800(800 x 1,000 / 1,000 x 1,000)
T- Slots	mm	20 x5	22 x7
Maximun Load	kg	1,500	3,000
Height from Ground	mm	1,130	1,190
Indexing Degree	°	1° / 360	1° / 360
Clamping Force	kg-m	5,000	5,000
TRAVEL			
X Axis Travel	mm	1,400 (1,200)	1,500
Y Axis Travel	mm	1,150 (950)	1,600 (1,180)
Z Axis Travel	mm	1,000 (800)	1,200 (1,000)
DISTANCE			
Spindle Nose to Table Center	mm	300~1,300(300~1,100)	225~1,425 (225~1,225)
Spindle Center to Table Top	mm	0~1,150(0~950)	0~1,600(0~1,200)
SPINDLE			
Spindle Taper	mm	BT/DIN/CAT 50	BT/DIN/CAT 50
Spindle Speed	rpm	4000 (6000)	4,000 (6,000)
FEED RATE			
X/Y/Z Rapid Traverse	m/min	15/15/15	24/24/24
Cutting Feed Rate	mm/min	1~5,000	1~5,000
Minimum Input	mm	0.001	0.001
ATC			
No. of Tools	tool	40 (60)	40 (60)
Max. Tool Length	mm	400	400
Max. Tool Weight	kg	35	35
Max. Tool Diameter	mm	ø125(with adjacent tool)/ ø245 (without tool)	
Tool selection		fixed type	fixed type
Tool Change Time	sec	14	14
MOTORS			
Spindle Motor	kW	11/15(15/18.5)	11/15(15/18.5)
X/Y/Z/B Motors	kW	3/3/4/4	4/4/4/4
Lubricator Motor	kW	0.025	0.025
Hydraulic Pump	kW	6	6
MISCELLANEOUS			
Air Consumption	kg/cm ²	6	6
Power Required	kVA	40	40
Hydraulic Tank Volume	L	40	70
Spindle Oil Cooler	L	4.6	4.6
Coolant Tank Volume	L	300	400
MACHINE DIMENSION			
Machine Outline	mm	4,250 x 5,350 x3,200 (3,400)	5,300 x 5,300 x 3,750
Machine Weight	kg	12,000	14,000

★ Y-axis with Motor Brake and counterweight lupm.

★ () As Option

★ Specifications are subject to change without prior notice.

SHM-800	
	800 x 800(800 x 1,000)
	22 x7
	3,000
	1,200
	1° / 360
	5,000
	2,000
	1,100(1,500)
	1,200
	300~1,500(300~1,700)
	0~1,100(0~1,500)
	BT/DIN/CAT 50
	4,000 (6,000)
	10/10/10
	1~5,000
	0.001
	40 (60)
	400
	35
	fixed type
	14
	11/15(15/18.5)
	4/4/4/4
	0.025
	4.5
	6
	40
	70
	4.6
	400
	6,400 x 5,400 x 3,800 (3370)
	14,600

STANDARD ACCESSORIES

- Spindle speed: 4000rpm
- Spindle motor: α12i(11/15kW)
- Spindle air blast system
- Programmable coolant system
- Lubricator system
- Hydraulic system
- M.P.G.
- Heat Exchanger in cabinet
- Auto power off
- Work light \ Alarm lamp
- Chip auger & chain type chip conveyor
- Machine inspection lists \ Operation manuals \ Controller manuals and circuit diagram
- Leveling screws and pads
- Tools box for machine adjustment
- RS-232C / RJ-45 interface
- AICC II ((200 Block / 30m)(FANUC)
- X/Y/Z axis linear scales
- Horizontal with ATC 40 tools
- Rotary table 630mm×630mm×360D(SHM-630L)
- Rotary table 800mm×800mm×360D(SHM-800/800L)

OPTIONAL ACCESSORIES

- Positioning block for Oil-Feed Holder
- Indexing table 0.001°
- Variety of controllers
(FANUC/MITSUBISHI/SIEMENS/HEIDENHAIN)
- Coolant through spindle
- Auxiliary work table
- ATC 60 tools

EQUIPTOP



EXCELLENT



FEATURES



PROVIDE



VALUE



2017 Taichung city
the 16th excellent
SMEs Golden hand award.



2017 The 14th
National brand:
Remarkable enterprise
Yushan Award.



2017 Republic of China
prominent enterprise
management association,
the 18th golden peak award:
Top 10 remarkable innovative
research and development.



2017 Republic of China
prominent enterprise
management association,
the 18th golden peak award:
Top 10 excellent business
pioneer model.



ISO 9001: 2015



Machinery
Directive
Number 1674



IT'S VERY WELL
MADE IN TAIWAN



NO. 88, SAN FENG E. RD., HOULI DISTRICT,
TAICHUNG CITY, TAIWAN 42156

■ TEL: +886-4-25576060

■ FAX: +886-4-25569677.25575866

■ e-mail: equiptop@hibox.hinet.net

■ <http://www.equiptop.com.tw>